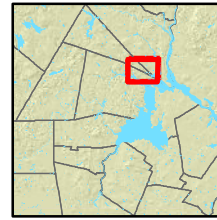


# Hunting Access

## Johnson and Bunker Creeks

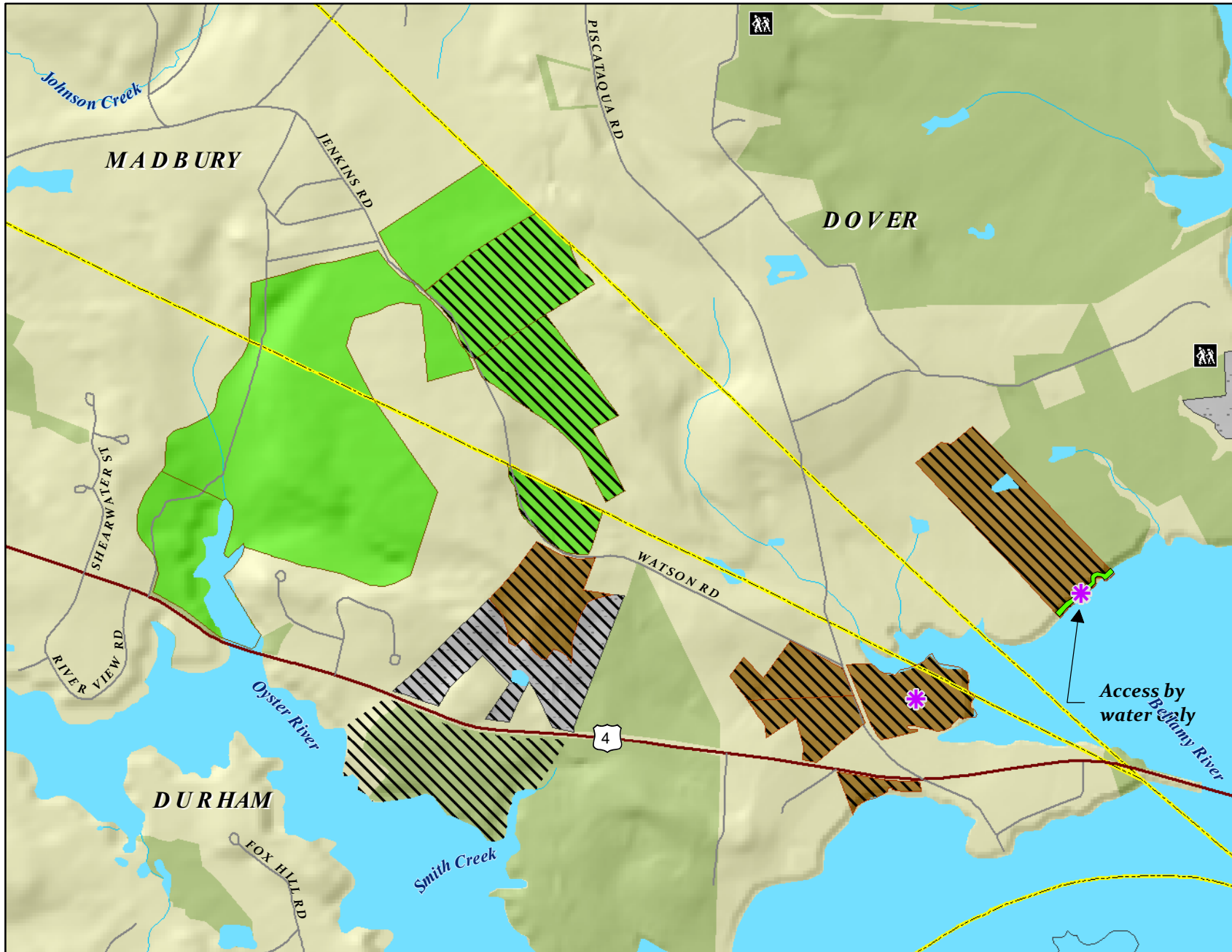
Great Bay Resource Protection Partnership

Location Map



SEE WEBSITE  
FOR ADDITIONAL  
HUNTING INFORMATION

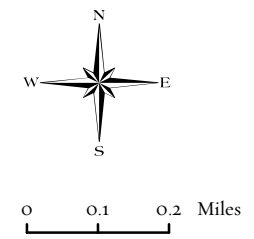
[www.greatbaypartnership.org](http://www.greatbaypartnership.org)



### Great Bay Partnership Tracts

#### Hunting Access Categories

- Hunting allowed
- Hunting at Discretion of Landowner
- Hunting not allowed
- Waterfowl hunting from water only
- Waterfowl hunting only (land or water)
- Waterfowl and upland game bird hunting only
- Easement
- Other Conservation and Public Lands
- Parking
- Trailhead with Parking
- Major Road
- Minor Road
- Railroads
- Streams
- Surface Water
- Municipal Boundaries



Map production by:  
**The Nature Conservancy**  
New Hampshire Field Office  
September 7, 2020