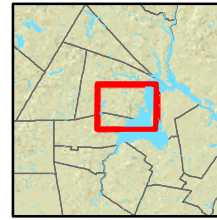


Public Access and Use

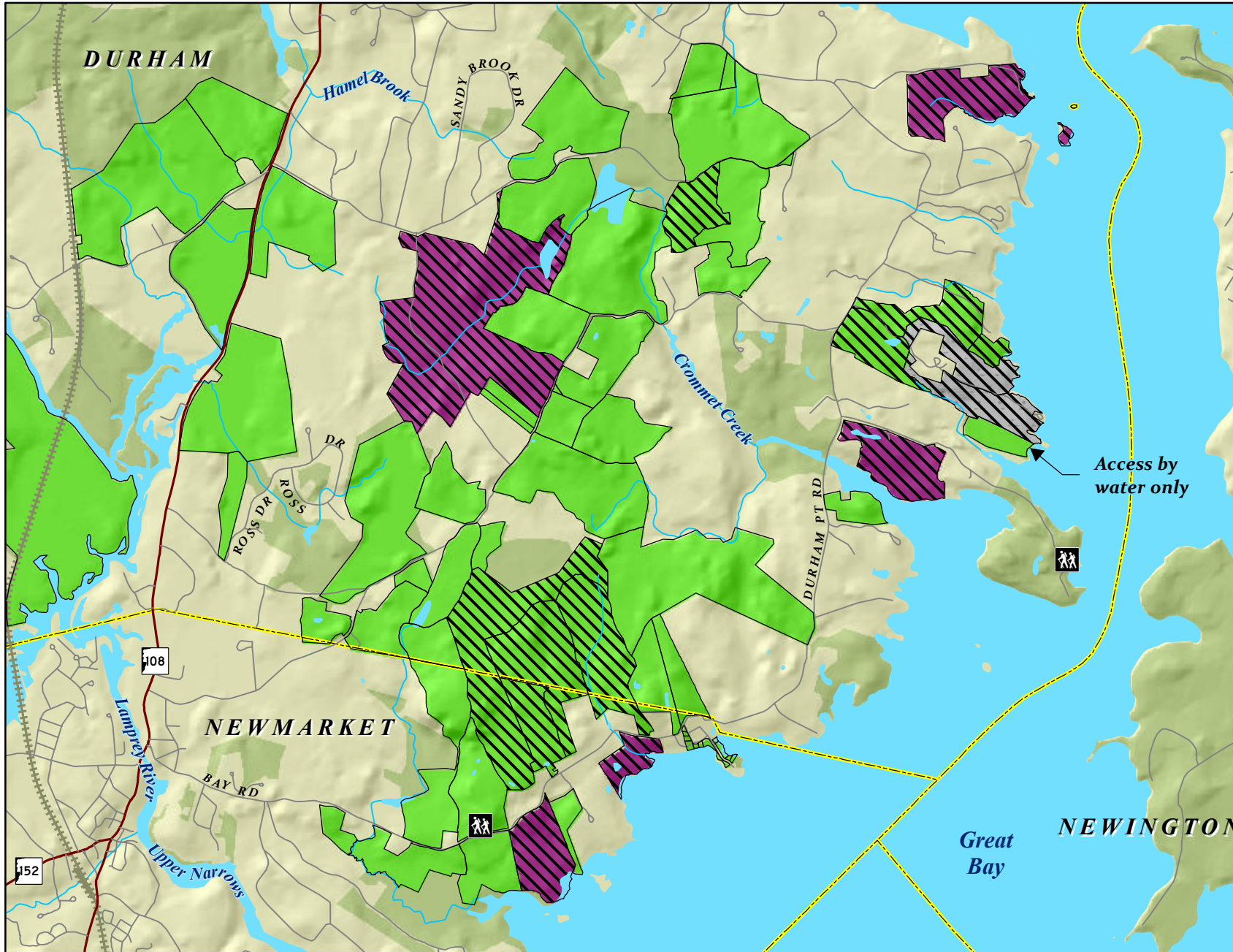
Crommet and Lubberland Creeks

Great Bay Resource Protection Partnership

Location Map



- PARTNERSHIP PERMITTED PEDESTRIAN USES INCLUDE:
- hiking •
 - cross-country skiing •
 - snowshoeing •
 - fishing •
 - canoeing/kayaking •
 - see website for complete list •

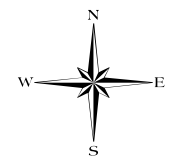


Great Bay Partnership Tracts

Public Access Categories

- No public access
- Pedestrian public access at discretion of landowner
- Pedestrian public access allowed
- Easement
- Other Conservation and Public Lands
- Parking
- Trailhead with Parking
- Major Road
- Minor Road
- Railroads
- Streams
- Surface Water
- Municipal Boundaries

Access by water only



0 0.225 0.45 Miles