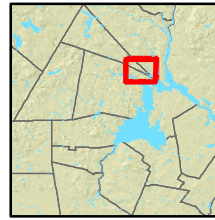


# Public Access and Use

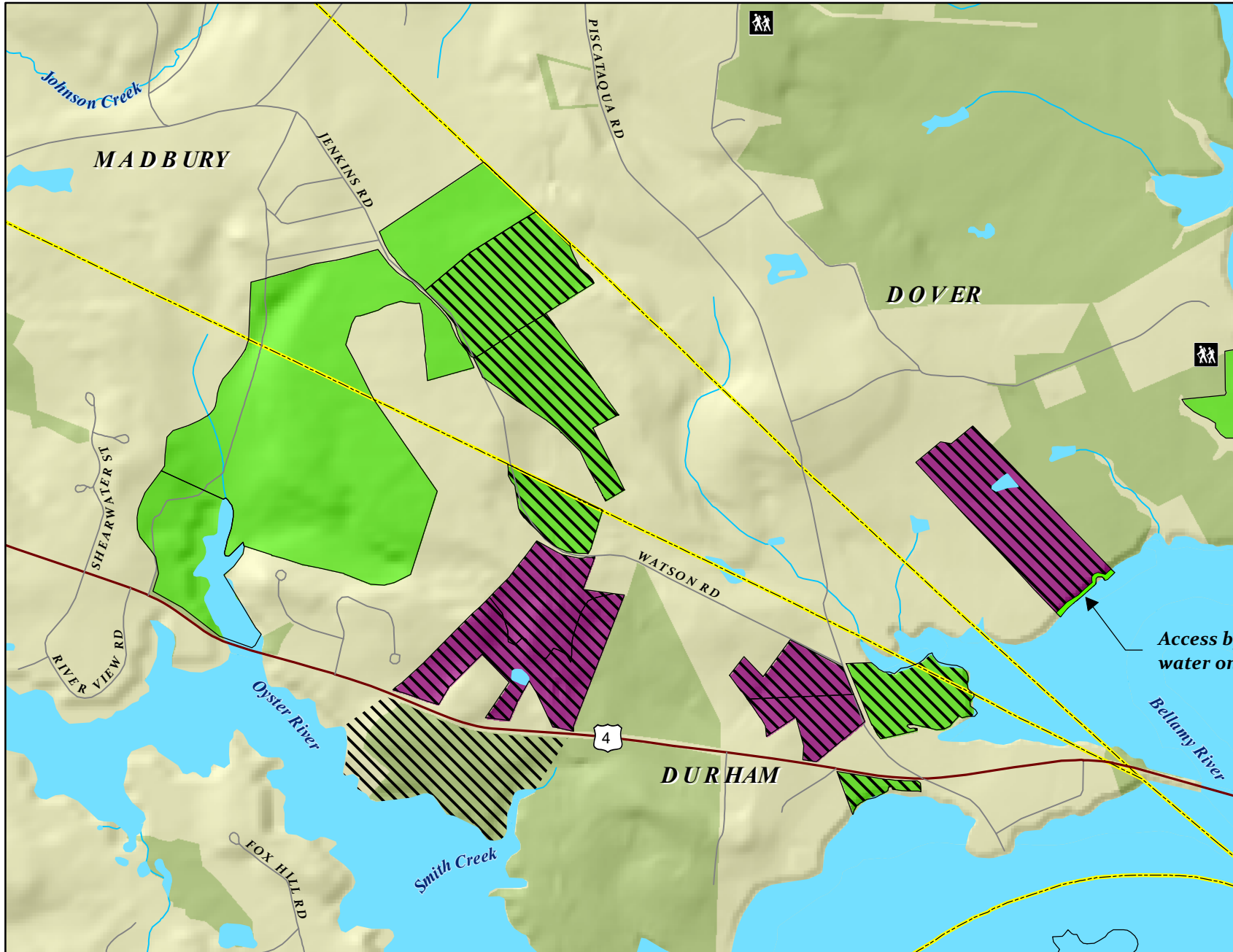
## Johnson and Bunker Creeks

### Great Bay Resource Protection Partnership

Location Map



- PARTNERSHIP PERMITTED PEDESTRIAN USES INCLUDE:
- hiking •
  - cross-country skiing •
  - snowshoeing •
  - fishing •
  - canoeing/kayaking •
  - see website for complete list •

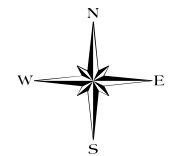


### Great Bay Partnership Tracts

#### Public Access Categories

- No public access
- Pedestrian public access at discretion of landowner
- Pedestrian public access allowed
- Easement
- Other Conservation and Public Lands
- Parking
- Trailhead with Parking
- Major Road
- Minor Road
- Railroads
- Streams
- Surface Water
- Municipal Boundaries

Access by water only



0 0.1 0.2 Miles